



A BRIGHTON ROAD, COULSDON

Bright 1 bedroom leasehold flat, perfect for first-time buyers, couples, or anyone wanting to downsize. Located in a prime location in Coulsdon. Parking space.

Fantastic for commuters. New Lease.

£195,000 Leasehold | Just added

UNDER OFFER





A great opportunity to purchase a 1 bedroom apartment located in the heart of Coulsdon. This flat is perfectly positioned to meet all your needs, featuring a cosy and well-designed living space, a separate bathroom and kitchen.

Excellent Transport Links, 32 minutes to the city

1 hour 15 minutes to the coast

Nearby Bus Stops: Conveniently located within 5 minutes for local journeys. this property offers a blend of urban convenience and suburban tranquillity, making it an ideal place for both professionals and those who appreciate easy access to both the city and the coast. A selection of retail and day to day amenities abound in the nearby main town centre you a variety of options for your weekly shop with a Tesco express, Aldi and Waitrose just 7 minutes away, local bars, restaurants, cafes and retail all found just 15 minutes from your doorstep.

Take a tour with Hallways exclusive VR file and contact us to book your viewing by appointment. T: 02035363959

Council Tax Band: C

Tenure: Leasehold (99 years)

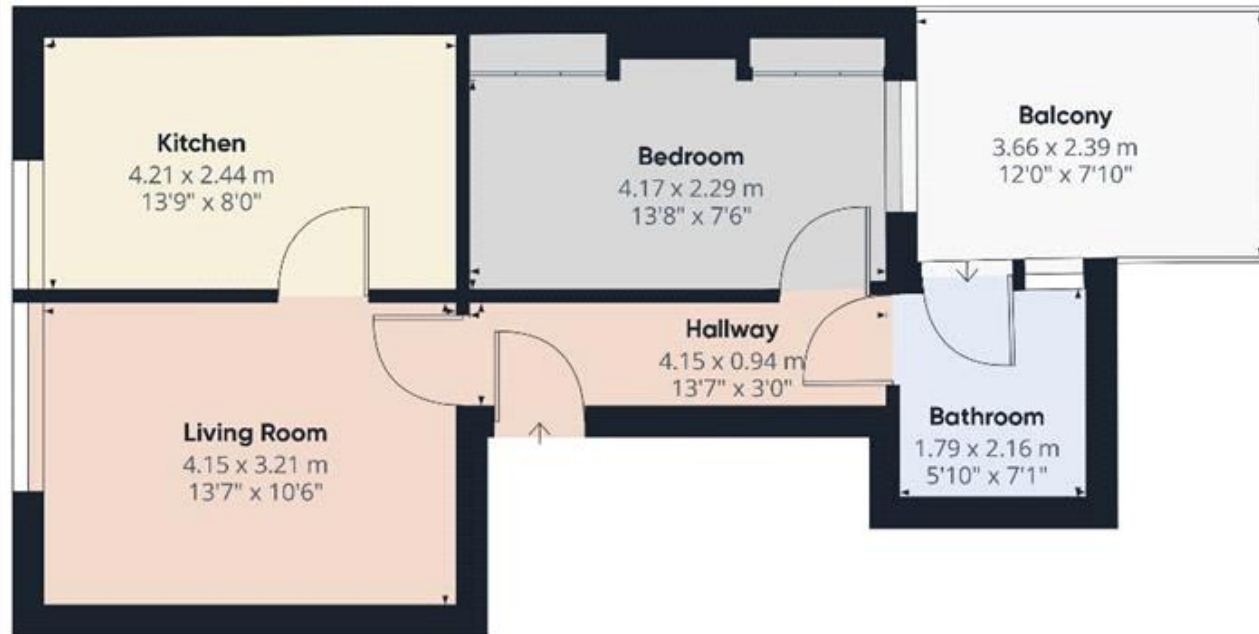
Ground Rent: £250 per year

Service Charge: £250 per year

<https://find-energy-certificate.service.gov.uk/energy-certificate/8401-5383-0329-8397-0253>

- 1 Bedroom flat
- Excellent access to M23/M25
- Fitted Bathroom
- Fitted Wardrobes
- Modern fitted kitchen
- Carpeted



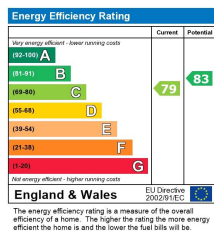


Approximate total area⁽¹⁾
43.84 m²
471.88 ft²

(1) Excluding balconies and terraces.

While every effort has been made to ensure accuracy, all measurements are approximate, not to scale. This floor plan is for illustrative purposes only.

GIRAFFE 360



Viewing by appointment only

Hallways Estates Limited

Rothie Barn, Croydon Lane, Banstead, Surrey SM7 3BG

Tel: 07903162312 Email: hello@hallwaysproperty.uk Website: hallwaysproperty.uk/

Whilst every effort is made to ensure the accuracy of these details, it should be noted that the measurements are approximate only. Floorplans are for representation purposes only and prepared according to the RICS Code of Measuring Practice by our floorplan provider. Therefore, the layout of doors, windows and rooms are approximate and should be regarded as such by any prospective purchaser. Any internal photographs are intended as a guide only and it should not be assumed that any of the furniture/fitings are included in any sale. Where shown, details of lease, ground rent and service charge are provided by the vendor and their accuracy cannot be guaranteed, as the information may not have been verified and further checks should be made either through your solicitor/conveyance. Where appliances, including central heating, are mentioned, it cannot be assumed that they are in working order, as they have not been tested. Please also note that wiring, plumbing and drains have not been checked.