



FLAT , ELIZABETH COURT, LIMES CLOSE, REDHILL

This first floor, two bedroom property sits within the private and modern development of Elizabeth Court. The property offers specialist living with well-designed interiors, making an exceptional find with generous room sizes. Ideal for individuals or small families.

£299,950 2 Bed purpose built flat





This first floor, two-bedroom flat, boasts open plan living with a kitchen and dining area easily accessible from the living room - perfect for entertaining or family meals. The French doors which open onto a Juliet balcony also allows you to enjoy the outdoors from the inside. The kitchen features, sleek, white gloss finished cupboards, adding a modern and sophisticated touch. The two double bedrooms are spacious, light and airy, one bedroom also benefits from an en-suite shower room.

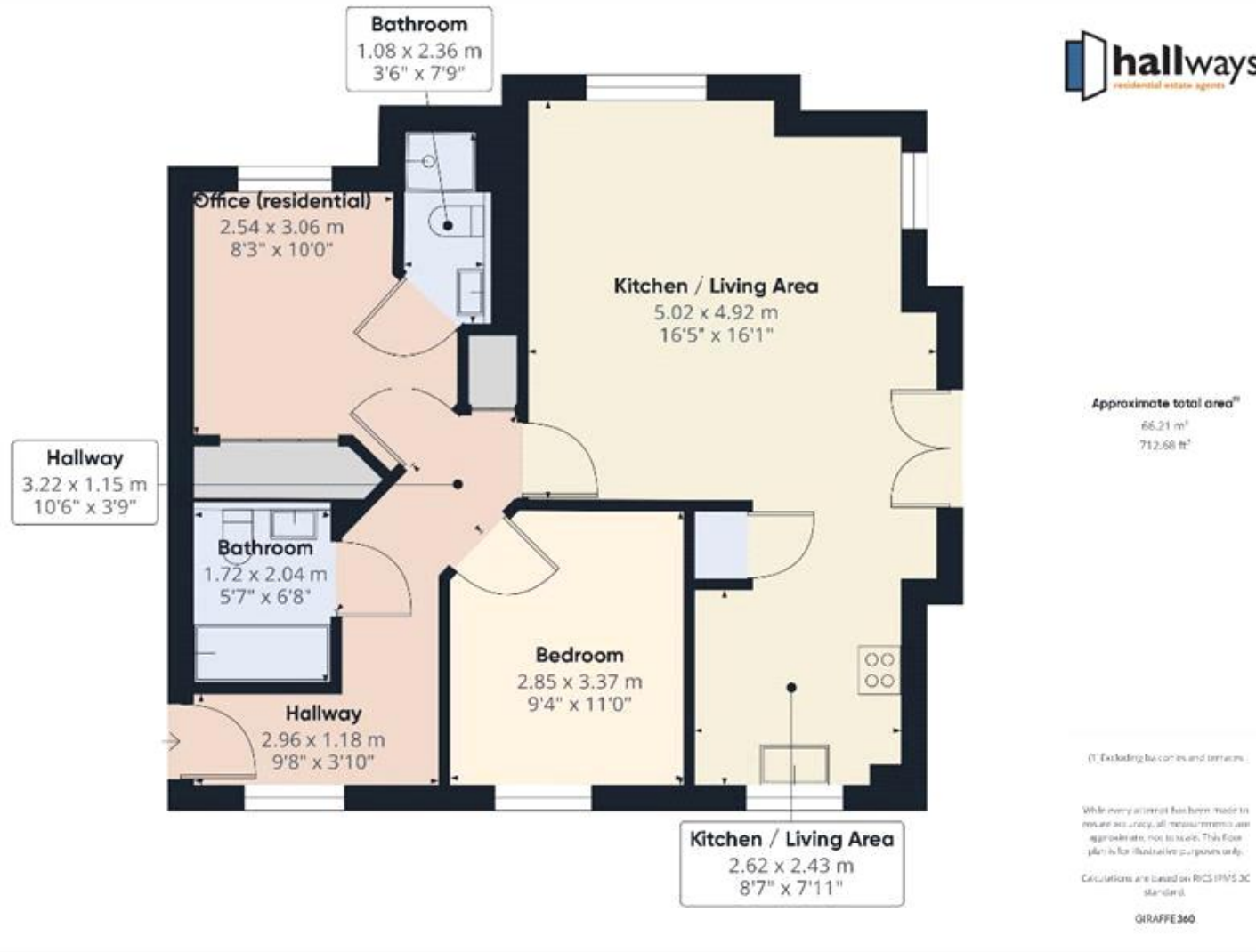
The property also offers allocated parking space and cycle storage. Elizabeth Court is situated close to Earlswood train station and East Surrey Hospital, both within walking distance.

Council Tax Band: C

- Allocated Parking
- Spacious first floor apartment
- Two double bedrooms; one with en-suite shower room
- Close to Earlswood train station
- Communal grounds & gardens







Viewing by appointment only
Hallways Estates Limited

Rothie Barn, Croydon Lane, Banstead, Surrey SM7 3BG

Tel: 07903162312 Email: hello@hallwaysproperty.uk Website: hallwaysproperty.uk/

Whilst every effort is made to ensure the accuracy of these details, it should be noted that the measurements are approximate only. Floorplans are for representation purposes only and prepared according to the RICS Code of Measuring Practice by our floorplan provider. Therefore, the layout of doors, windows and rooms are approximate and should be regarded as such by any prospective purchaser. Any internal photographs are intended as a guide only and it should not be assumed that any of the furniture/fittings are included in any sale. Where shown, details of lease, ground rent and service charge are provided by the vendor and their accuracy cannot be guaranteed, as the information may not have been verified and further checks should be made either through your solicitor/conveyance. Where appliances, including central heating, are mentioned, it cannot be assumed that they are in working order, as they have not been tested. Please also note that wiring, plumbing and drains have not been checked.