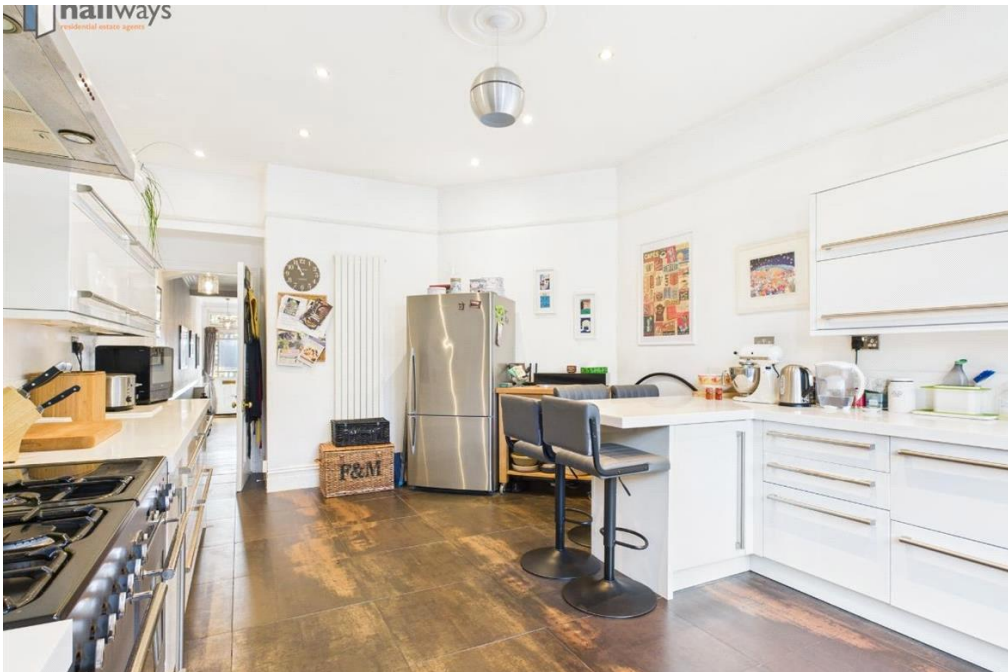




Beautifully presented 4 bed semi detached home in South Croydon.  
Large sunny rear garden with family patio.  
Perfect for families and located within an excellent school catchment and good transport links into London.  
Full of character with real internal style.  
Close to South Croydon Station.







This charming four-bedroom house in South Croydon offers a perfect blend of comfort and modern living. Situated in a peaceful, tree-lined street, the property is ideal for families looking for both convenience and space. Upon entering, you are greeted by a spacious, light-filled hallway leading to the inviting living room with large windows, allowing natural light to flood the space. The living area is perfect for relaxing with loved ones, featuring a contemporary fireplace and ample space for seating.

The open-plan kitchen and dining area is a great feature of the home, with bright countertops, all appliances, and plenty of storage. French doors open from the dining space into a versatile garden, providing a perfect setting for outdoor entertaining or simply enjoying a quiet moment in nature.

Upstairs, the four bedrooms offer a variety of options for both family and home office use. The master bedroom features an en-suite bathroom and built-in wardrobes, ensuring both privacy and comfort. The second bedroom has its own staircase with access to the garden area. The additional bedrooms are well-proportioned, with plenty of room for furnishings and personalization.

The family bathroom is modern, with a stylish design and high-quality fittings. Additionally, the house boasts a downstairs WC, adding to the practicality of the layout.

The rear garden is well-maintained, providing a peaceful escape. The home is located close to South Croydon Station, making it ideal for commuters, and is within easy reach of local shops and green spaces. An excellent selection of eateries in the restaurant quarter.

Easy access to a number of excellent schools including; Regina Coeli, Cumnor House and Whitgift.

A choice of stations and well linked bus routes, make this an easy option for teenagers to travel to secondary schools and colleges.

This four-bedroom house in South Croydon offers a perfect combination of modern living, family-friendly features, and an excellent location.

Take a tour with our exclusive 3D VR and get in touch to book your in person: [hello@hallwaysproperty.uk](mailto:hello@hallwaysproperty.uk)

**Council Tax Band: D (Croydon)**

**Tenure: Freehold**

- 2 Bathrooms
- Attractive Exterior and rear garden
- Downstairs wc
- Popular Residential Location
- 4 Bed Semi Detached House
- Popular School Catchment
- Lots of Character
- Wooden Flooring
- Bright & Airy

