



RED CLOVER GARDENS, COULSDON

2 bed apartment in a Central Coulsdon location.

AVAILABLE IMMEDIATELY

Beautifully presented and ready to move into.

Will suit professional couples or young families. Excellent for commuting as a short walk to Coulsdon South Railway.

Choice of schools close by.



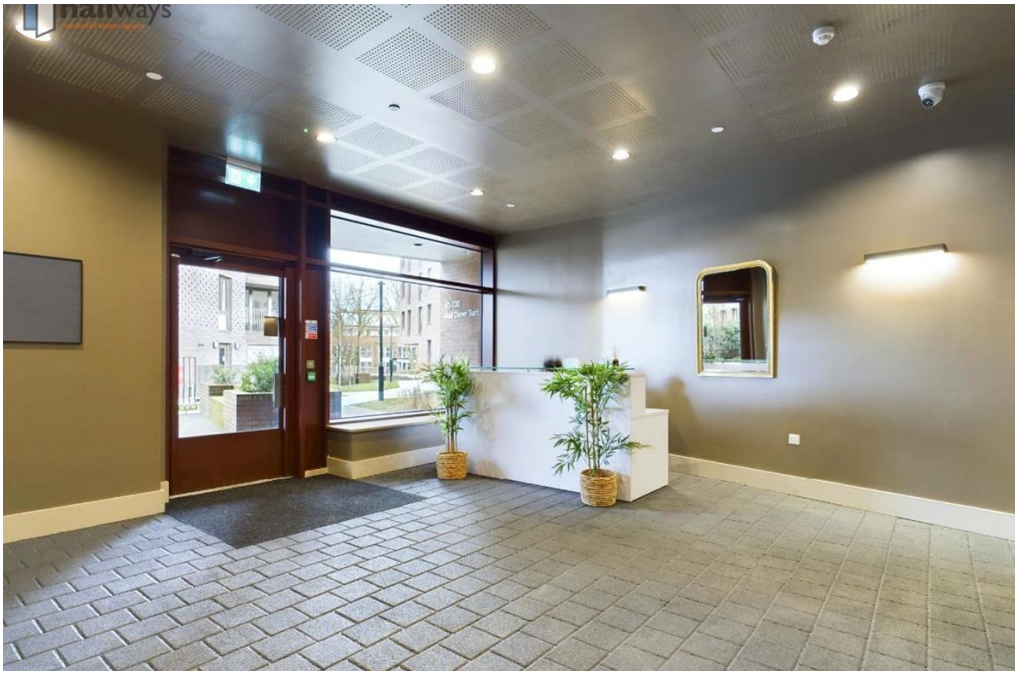


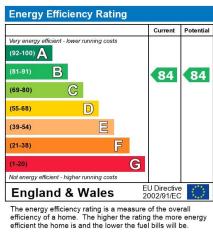
Hallways are pleased to market this stunning 2 bed property, located on 4th floor with an easy stroll to Coulsdon South Station and Coulsdon Town Centre.
Ready for immediate move in.
Brand new kitchen and bathroom, this flat oozes style and the block is very well managed.
Wooden flooring throughout and neutral decor.

Call us to book your in person viewing.
hello@hallwaysproperty.uk

Council Tax Band: C (Croydon)







Viewing by appointment only
Hallways Estates Limited
Rothie Barn, Croydon Lane, Banstead, Surrey SM7 3BG
Tel: 07903162312 Email: hello@hallwaysproperty.uk Website: hallwaysproperty.uk/

Whilst every effort is made to ensure the accuracy of these details, it should be noted that the measurements are approximate only. Floorplans are for representation purposes only and prepared according to the RICS Code of Measuring Practice by our floorplan provider. Therefore, the layout of doors, windows and rooms are approximate and should be regarded as such by any prospective tenant.