



Nestled on a sought-after residential road, this beautifully extended four bedroom home combines classic charm with generous modern living spaces - perfect for growing families or those looking to upsize in comfort and style.

**£675,000** Freehold | Must see







From the moment you arrive, the property's traditional bay-fronted facade and private driveway with attached garage make a striking first impression. Inside, the house offers over 100sqm of living space across three floors.

A welcoming entrance hallway leads to an expansive living room, flooded with natural light from the bay window and French doors to the garden.

The property boasts a stylish kitchen with plenty of workspace and storage, with direct access to the garden - perfect for summer entertaining. Additional conveniences include a dedicated laundry room and a modern downstairs WC.

The first floor comprises three generous bedrooms, including a large primary bedroom with bay window, a large double bedroom to the rear, and a cosy third room - ideal as a home office, nursery or guest room. A well-finished family bathroom featuring a full-size bath and contemporary fittings.

The second floor offers a large and beautifully decorated bedroom, with lots of natural light together with an en-suite bathroom. The perfect haven to relax and unwind.

The garden has a raised patio area for entertaining and a further grassed area. This garden provides a tranquil re-treat.

Positioned in a quiet and family friendly neighbourhood, this home is within easy reach of highly-rated schools, local amenities, green spaces and excellent transport links - making it an ideal base for commuters and families alike.

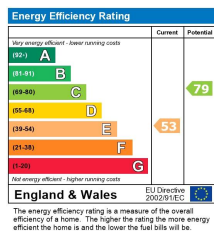
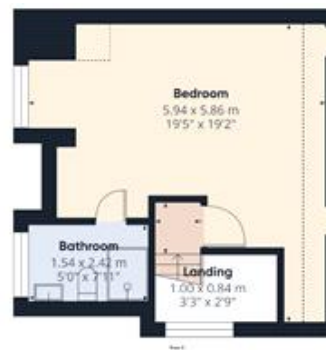
**Tenure:** Freehold

**Parking options:** Driveway

**Garden details:** Private Garden







Viewing by appointment only  
Hallways Estates Limited  
Rothie Barn, Croydon Lane, Banstead, Surrey SM7 3BG  
Tel: 07903162312 Email: [hello@hallwaysproperty.uk](mailto:hello@hallwaysproperty.uk) Website: [hallwaysproperty.uk/](http://hallwaysproperty.uk/)

Whilst every effort is made to ensure the accuracy of these details, it should be noted that the measurements are approximate only. Floorplans are for representation purposes only and prepared according to the RICS Code of Measuring Practice by our floorplan provider. Therefore, the layout of doors, windows and rooms are approximate and should be regarded as such by any prospective purchaser. Any internal photographs are intended as a guide only and it should not be assumed that any of the furniture/fitings are included in any sale. Where shown, details of lease, ground rent and service charge are provided by the vendor and their accuracy cannot be guaranteed, as the information may not have been verified and further checks should be made either through your solicitor/conveyance. Where appliances, including central heating, are mentioned, it cannot be assumed that they are in working order, as they have not been tested. Please also note that wiring, plumbing and drains have not been checked.