



Hallways are delighted to present this stylish and well-presented two-bedroom flat in the highly sought-after heart of Coulsdon. Offering a bright and airy interior, modern finishes, and unbeatable transport links.

£1,750 pcm 2 bedroom flat to rent





Step inside this beautifully maintained apartment, where a spacious open-plan lounge and dining area offers the perfect setting for relaxing or entertaining. The modern kitchen is thoughtfully designed, combining style and practicality.

A hallway leads to two well-sized double bedrooms and a contemporary bathroom, where a skylight floods the space with natural light. The entire property is finished in soft, neutral tones, making it a calm and inviting home.

The location is ideal for commuters, with fast links into London from both Coulsdon Town and Coulsdon South stations. You'll also enjoy the vibrant high street just moments away, with its excellent range of independent coffee shops, restaurants, bars, Waitrose and Aldi.

This property is part-furnished, with details to be discussed upon enquiry.

Please email us at hello@hallwaysproperty.uk to arrange a viewing

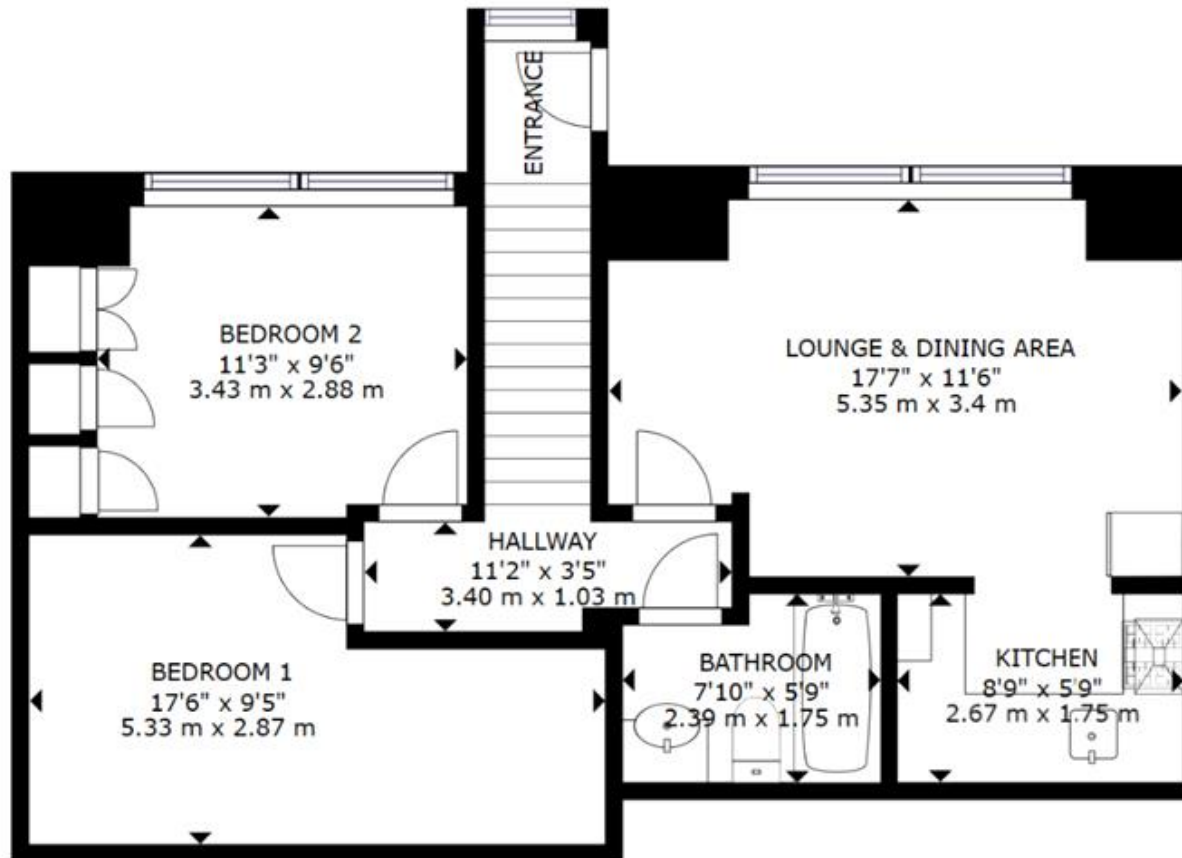
Council Tax Band: B (Croydon)

Deposit: £2,019.23

- 2 Double Bedrooms
- Close to all amenities
- Commuters dream
- Fantastic choice of Local Restaurants
- Great Location







GROSS INTERNAL AREA
FLOOR 1: 668 sq ft, 62.04 m²
TOTAL: 668 sq ft, 62.04 m²
SIZES AND DIMENSIONS ARE APPROXIMATE, ACTUAL MAY VARY.



Energy Efficiency Rating		
Very energy efficient - lower running costs	Current	Potential
92-100 A		
81-91 B		
69-80 C	79	79
55-68 D		
39-54 E		
21-38 F		
1-20 G		
Not energy efficient - higher running costs		
England & Wales EU Directive 2002/91/EC		
The energy efficiency rating is a measure of the overall efficiency of a home. The higher the rating the more energy efficient the home is and the lower the fuel bills will be.		

Viewing by appointment only
Hallways Estates Limited

Rothie Barn, Croydon Lane, Banstead, Surrey SM7 3BG
Tel: 07903162312 Email: hello@hallwaysproperty.uk Website: hallwaysproperty.uk/

Whilst every effort is made to ensure the accuracy of these details, it should be noted that the measurements are approximate only. Floorplans are for representation purposes only and prepared according to the RICS Code of Measuring Practice by our floorplan provider. Therefore, the layout of doors, windows and rooms are approximate and should be regarded as such by any prospective tenant.